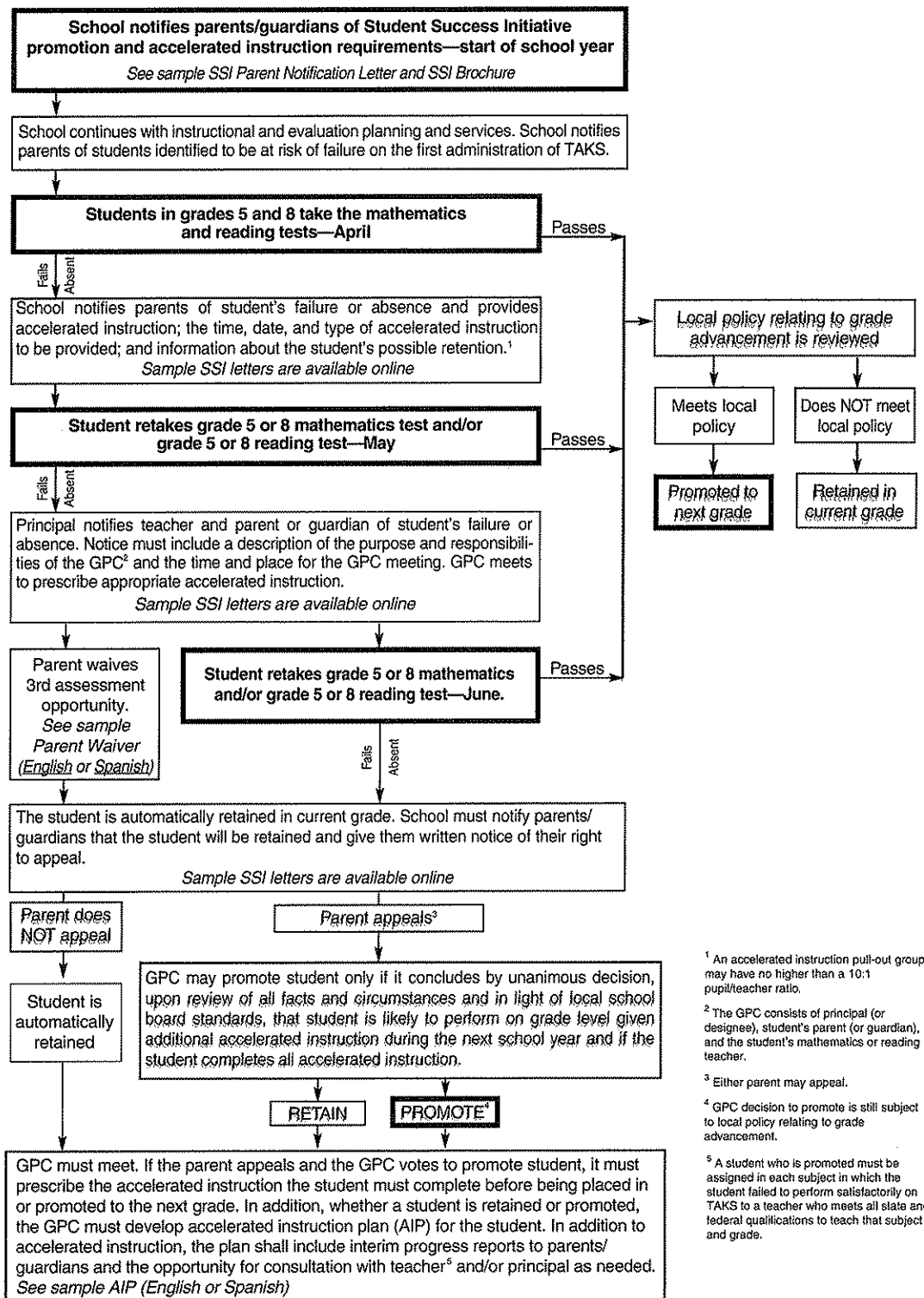


Flowchart for Students Taking TAKS

Grade Advancement Requirements for General Education Students Enrolled in SSI Grades and Subjects



¹ An accelerated instruction pull-out group may have no higher than a 10:1 pupil/teacher ratio.

² The GPC consists of principal (or designee), student's parent (or guardian), and the student's mathematics or reading teacher.

³ Either parent may appeal.

⁴ GPC decision to promote is still subject to local policy relating to grade advancement.

⁵ A student who is promoted must be assigned in each subject in which the student failed to perform satisfactorily on TAKS to a teacher who meets all state and federal qualifications to teach that subject and grade.

NOTE: For information regarding TAKS, TAKS (Accommodated), and TAKS–M for SSI grades and subjects for students receiving special education services, see the flowcharts on pages 33–34.