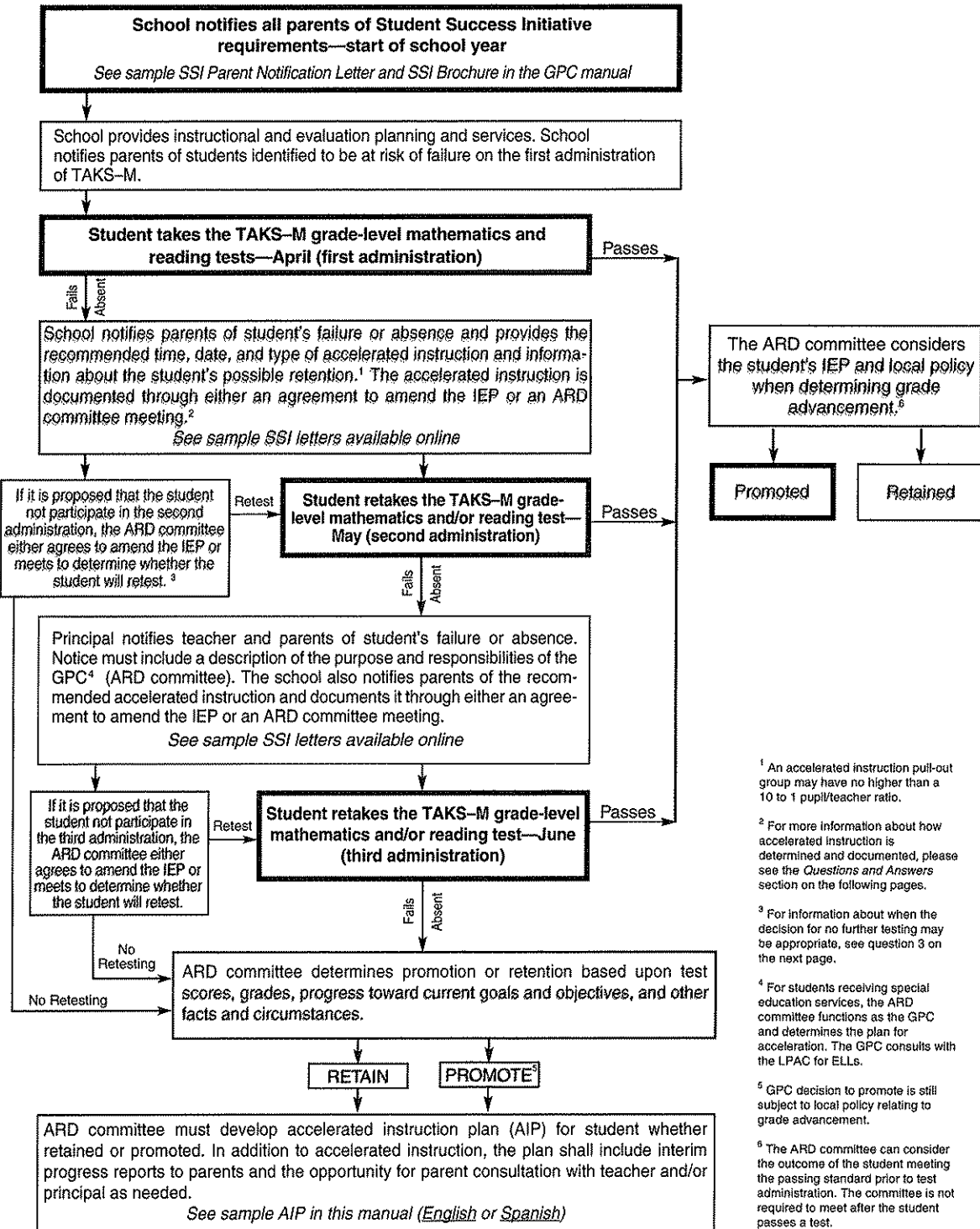


SSI Grade Advancement Requirements for Students Receiving Special Education Services Taking TAKS–M



¹ An accelerated instruction pull-out group may have no higher than a 10 to 1 pupil/teacher ratio.

² For more information about how accelerated instruction is determined and documented, please see the *Questions and Answers* section on the following pages.

³ For information about when the decision for no further testing may be appropriate, see question 3 on the next page.

⁴ For students receiving special education services, the ARD committee functions as the GPC and determines the plan for acceleration. The GPC consults with the LPAC for ELLs.

⁵ GPC decision to promote is still subject to local policy relating to grade advancement.

⁶ The ARD committee can consider the outcome of the student meeting the passing standard prior to test administration. The committee is not required to meet after the student passes a test.

