



SOCIAL EMOTIONAL LEARNING PLAN

Guidance and Counseling Department



2020-2021
JUDSON ISD
8205 Palisades Dr., Live Oak, Texas 78233
July 15, 2020 - Updated

Staff Member	Location	SEL Responsibility
Professional School Counselor	<ul style="list-style-type: none"> • Elementary School • Middle School • High School 	<ul style="list-style-type: none"> • Conduct Monthly Guidance. • Teach Character Traits. • Provide Groups. • Follow the Texas Model for Comprehensive School Counseling Programs.
At-Risk Counselor	<ul style="list-style-type: none"> • Judson High School • Veterans Memorial High School • Wagner High School 	<ul style="list-style-type: none"> • Plan and develop effective At-Risk Programs. • Provide campus support for students who are at risk of dropping out. • Provide case management.
College and Career Counselors	<ul style="list-style-type: none"> • High Schools 	<ul style="list-style-type: none"> • Oversee college and career readiness services. • Assist with college applications; FASFA and TASFA. • Ensure students are prepared for college and career transitions.
Social Emotional Learning Specialist	<ul style="list-style-type: none"> • Assigned to campus by need and to coordinate SEL district-wide activities. 	<ul style="list-style-type: none"> • Provide district-wide support for social emotional services. • Provide district-wide support for trauma informed care services. • Coordinate crisis response services for student and families
District Social Workers	<ul style="list-style-type: none"> • Assigned to campus by need and to coordinate district-wide activities. 	<ul style="list-style-type: none"> • Provide district-wide social service programs. • Provide district-wide support to campuses. • Provide case management and group counseling.
Social Workers	<ul style="list-style-type: none"> • Candlewood, Hopkins, Miller's Point, and Paschall ES • Kirby and Metzger MS • Veterans Memorial and Wagner HS • JCARE 	<ul style="list-style-type: none"> • Coordinate wrap around services for students and families. • Provide case management, individual, and group counseling. • Link between school, family and community.
CARE Team	<ul style="list-style-type: none"> • Elementary Schools • Middle Schools • High Schools 	<ul style="list-style-type: none"> • Provide mental health and social services to students while at home. • Assist campuses to ensure students have resources needed to be academically successful during virtual learning.
Attendance Officers Student and Family Support Officers	<ul style="list-style-type: none"> • Elementary school - 2x month • Judson, Kirby, Kitty Hawk, Metzger, and Woodlake Hills MS • Judson, Veterans Memorial, and Wagner HS 	<ul style="list-style-type: none"> • Assist with attendance monitoring to help reduce dropouts and increase graduation rates. • Provide campus wide attendance intervention programs. • Provide community resources to students and families.
Juvenile Court Case Managers	<ul style="list-style-type: none"> • Elementary Schools • Middle Schools • High Schools 	<ul style="list-style-type: none"> • Assist with attendance monitoring to help reduce dropouts and increase graduation rates. • Assist with truancy court cases and provides prevention guidance to families. • Assist with district attendance forums.
Communities in Schools	<ul style="list-style-type: none"> • Candlewood, and Park Village ES • Kirby and Metzger MS • Wagner HS 	<ul style="list-style-type: none"> • Assist with attendance initiatives to help reduce dropouts and increase graduation rates • Provide community resources to empower student success • Provide case management services to students enrolled in program

Definition: Social and emotional learning (SEL) is the process through which children and adults acquire and effectively apply the knowledge, attitudes, and skills necessary to understand and manage emotions, set and achieve positive goals, feel and show empathy for others, establish and maintain positive relationships, and make responsible decisions.

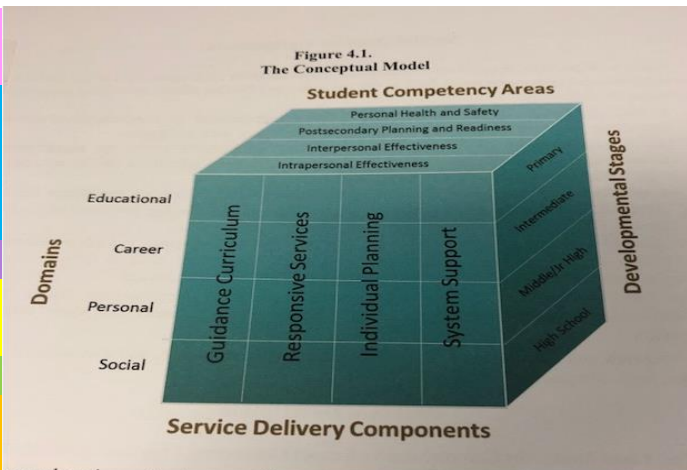
Goal 1: Provide Social Emotional Learning (SEL) opportunities to ensure our students become well-rounded.

Goal 2: Provide a safe learning environment and ensure social and emotional needs are met so our students can be academically successful.

Framework:

Social and Emotional Learning

- Interpersonal Effectiveness - Social Awareness
- Interpersonal Effectiveness - Relationship Skills
- Intrapersonal Effectiveness - Self-Awareness
- Intrapersonal Effectiveness - Self Management
- Intrapersonal Effectiveness - Responsible Decision Making
- SEL Curriculum and Instruction - Classrooms
- Personal Health and Safety - School-Wide Practice and Policies - School
- Postsecondary Planning and Readiness
- Family and Community Partnerships- Homes and Communities



Increase Social Intelligence (SI) is the ability to get along well with others, and to get them to cooperate with you. The social intelligence quotient (SQ) is a statistical abstraction, similar to the 'standard score' approach used in IQ tests, with a mean of 100. Scores of 140 or above are considered very high. Social scientist Ross Honeywill believes social intelligence is an aggregated measure of self- and social-awareness, evolved social beliefs and attitudes, and a capacity and appetite to manage complex social change.[2] Psychologist, Nicholas Humphrey believes that it is social intelligence, rather than quantitative intelligence, that defines who we are as humans.

Increase Emotional IQ - (EQ) or emotional intelligence is the ability to identify, assess, and control the emotions of oneself, of others, and of groups.

Adaptability Quotient (AQ) will be critical for the future of work. Loosely defined as the ability to adapt and thrive in a fast-changing environment, AQ is taking its place alongside established quotients like IQ and EQ when it comes to determining an employee's value.

SELF-AWARENESS

The ability to accurately recognize one's own emotions, thoughts, and values and how they influence behavior. The ability to accurately assess one's strengths and limitations, with a well-grounded sense of confidence, optimism, and a "growth mindset."

- IDENTIFYING EMOTIONS
- ACCURATE SELF-PERCEPTION
- RECOGNIZING STRENGTHS
- SELF-CONFIDENCE
- SELF-EFFICACY

SELF-MANAGEMENT

The ability to successfully regulate one's emotions, thoughts, and behaviors in different situations — effectively managing stress, controlling impulses, and motivating oneself. The ability to set and work toward personal and academic goals.

- IMPULSE CONTROL
- STRESS MANAGEMENT
- SELF-DISCIPLINE
- SELF-MOTIVATION
- GOAL SETTING
- ORGANIZATIONAL SKILLS

SOCIAL AWARENESS

The ability to take the perspective of and empathize with others, including those from diverse backgrounds and cultures. The ability to understand social and ethical norms for behavior and to recognize family, school, and community resources and supports.

- PERSPECTIVE-TAKING
- EMPATHY
- APPRECIATING DIVERSITY
- RESPECT FOR OTHERS

RELATIONSHIP SKILLS

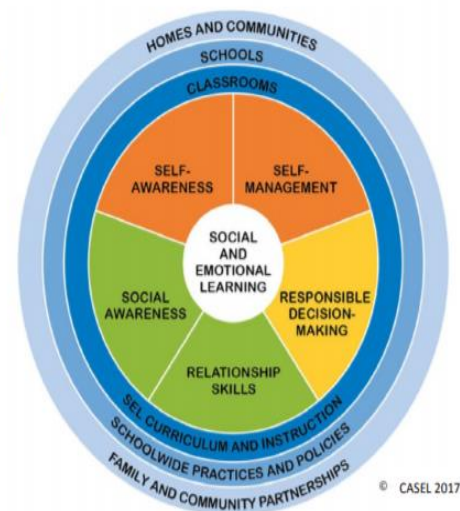
The ability to establish and maintain healthy and rewarding relationships with diverse individuals and groups. The ability to communicate clearly, listen well, cooperate with others, resist inappropriate social pressure, negotiate conflict constructively, and seek and offer help when needed.

- COMMUNICATION
- SOCIAL ENGAGEMENT
- RELATIONSHIP BUILDING
- TEAMWORK

RESPONSIBLE DECISION-MAKING

The ability to make constructive choices about personal behavior and social interactions based on ethical standards, safety concerns, and social norms. The realistic evaluation of consequences of various actions, and a consideration of the well-being of oneself and others.

- IDENTIFYING PROBLEMS
- ANALYZING SITUATIONS
- SOLVING PROBLEMS
- EVALUATING
- REFLECTING
- ETHICAL RESPONSIBILITY



*<http://secondaryguide.casel.org/casel-secondary-guide.pdf>

Future Items to build SEL Plan:

- 5th and 8th Grade Transition Camps/fairs/symposiums to promote a position experience for incoming 6th and 9th graders. Possible topics: bullying prevention, cyberbullying, network safety, 8th grade panel of students, etc...
- District- Wide Mentoring Program – More internships that coordinate with community partnerships to be able to expand social emotional learning and share components of family engagement.
- Expand district wide programs where mindfulness practices are built into every campus daily schedule (District-Wide Fathers Daughter and Mothers Son Events).
- Use a behavioral management system to assess students in order to collect data on behavior.
- Campus Parent Trainings
- Class Catalyst

Audience	Resource	Goal
District-Wide Students	<p>Guidance Lesson Topics 4 Skill Goals</p> <p>Counselors will ensure guidance lessons are provided to all students to build social, emotional, and soft skills.</p>	<p>Interpersonal Effectiveness - Social, Personal, Career, and Educational - All JISD students receive SEL through guidance lessons.</p> <p>We need to build social and emotional skills to ensure the Comprehensive and Developmental Guidance and Counseling Program Model is followed from Pre-K – 12th grade.</p> <p>2017-18: Curriculum focus on Self-Confidence Development, Motivation to Achieve, Decision –Making , Goal Setting, Planning, Problem-Solving Skills, Interpersonal Effectiveness, Communication Skills, Cross-Cultural Effectiveness, and Responsible Behavior.</p> <p>New model- 2018-19: Personal Health and Safety, Postsecondary Planning and Readiness, Interpersonal Effectiveness, Intrapersonal Effectiveness.</p>
<p>District-Wide Students at Participating Campuses: Wagner HS, Kirby MS, Metzger MS, Woodlake Hills MS, Park Village ES, Candlewood ES, and Woodlake ES</p>	<p>Communities In Schools</p>	<p>Interpersonal Effectiveness -System Support - Self-Awareness Self-Management, Responsible Decision Making - Guidance/Counseling department will collaborate with CIS staff on their campus to provide case management services and share resources to district students, parents and families.</p>
District-Wide	Our Lady of the Lake University	<p>Interpersonal Effectiveness – Relationship Skills - Worden School of Social Service student will mentor students in individual and group activities with other mentors/mentees weekly. JISD School Social Workers will serve ad field consultants.</p>
District-Wide Students	Second Step Curriculum	<p>Interpersonal Effectiveness Personal Health and Safety - The program promotes school success, school connectedness, and a safe and respectful school climate by directly teaching student the skills that strengthen their ability to: learn, have empathy, manage emotions and solve problems</p>

Audience	Resource	Goal
District-Wide training for teachers and all staff during District and Campus PD	Daily Self Affirmations: Everyone stops to help themselves by filling their cup with a self-affirmation for the day. Which can, include positive daily quotes, anti- bullying messages, and self-care, wake-up and brain breaks activities during morning announcements both in classroom & virtually.	Intrapersonal Effectiveness – Social Awareness - To work on ourselves in order to be successful and bring more positivity to our students and families. Creating a positive school culture and community.
District-Wide training for teachers and all staff	Mindful Practices (Ongoing)	Intrapersonal Effectiveness – <ul style="list-style-type: none"> • Social Awareness • Relationship Skills Understanding the needs of our students and their background to cope with stressors. This will be ideal to motivate our staff and provide professional development for soft skills (emotional IQ) Research states that students with a high emotional IQ can become more successful than students with a higher Academic IQ. Teaching Mindful Practices to students will help them with self-management skills.
District-Wide Students Audience – High and Middle School	Girl Scouts 2019-2020 2020-2021	Intrapersonal Effectiveness - <ul style="list-style-type: none"> • Self-Awareness • Self-Management • Responsible Decision Making Fostering partnerships with community organizations in helping to understanding the needs of our students and their background to cope with stressors and to provide social/emotional support.
District-Wide Students Participating Campuses: Candlewood ES, Escondido ES, Park Village ES & Woodlake ES New campuses - Olympia ES, Masters ES, Kirby MS & Metzger MS	My Brother’s Keeper Restorative Justice Practices 2019-Present Training completed July 16-18, 2019 Training Dates Pending	Intrapersonal Effectiveness - <ul style="list-style-type: none"> • Responsible Decision-making Improving campus culture through rethinking discipline strategies and restoring a student’s sense of belonging and connectedness within a school environment.
Elementary Counselors and Social Workers	Mind Yeti Online Interactive Mindfulness Program	Intrapersonal Effectiveness – <ul style="list-style-type: none"> • Self-Awareness • Self-Management Responsible Decision Making To teach students self-regulation and identify emotions.

Audience	Resource	Goal
District-Wide Students	Small Groups	SEL Curriculum and Instruction - Social, Personal, Career, & Educational- Groups for all different topics that promote Social Emotional Learning will be provided throughout the school year- Such as improving interpersonal skills, study skills, friendship/relationship skills, leadership skills, etc.
District-Wide training for all staff	Safe Schools Beginning of the School Year Requirements	Personal Health and Safety - Online Presentation and quiz for all staff for the following topics: Bullying Prevention, CPS Reporting, and Suicide Prevention.
District-Wide training for all staff	School Safety during a crisis (Ongoing)	Personal Health and Safety - Prepare for and learn to effectively deal with an active shooter situation on campuses. Each department will contribute to the school safety plan.
District-Wide training for all staff	Trauma Informed Care (Ongoing)	Personal Health and Safety - Providing an extension of Mental Health Awareness through Trauma Informed Care training.
District-Wide Counselors & Social Workers	Healthmasters (Ongoing)	Personal Health and Safety - Counselors will use the computer-based program to keep track of important mental and behavioral health information of students. Improves the communication between all schools in district for those students that are highly mobile. Will be able to gather data and see trends easily.
District-Wide Students	Second Step Curriculum Anti-Bullying Awareness for grades Pre-K-5th & 6th-8th	Personal Health and Safety, Intra and Interpersonal Effectiveness - The program promotes School Success, school connectedness, and a safe and respectful school climate by directly teaching student the skills that strengthen their ability to stand up and report bullying.
Students	Pacer.org National Bullying Prevention Center Anti-Bullying Awareness for Grades 6th-8th	Personal Health and Safety, Intra and Interpersonal Effectiveness - The program promotes School success, school connectedness, and a safe and respectful school climate by directly teaching student the skills that strengthen their ability to stand up and report bullying.
District Wide	SITT by UP	Personal Health and Safety - Sterling's Initiative Through Technology by Unifying Processes.

Audience	Resource	Goal
District Administrators and Counseling Staff	Handle With Care	Personal Health and Safety - The program promotes school awareness to administrators and counseling staff via school and police department connectedness in order to meet the student's social-emotional needs, and ensure a safe and respectful school climate.
Students - 5th and 8th Transitions	Counselors complete transition forms and work with receiving counselor	Personal Health and Safety - In order to ensure we provide the best services for students. Creating a positive social environment for them in order to be successful
District Wide, 7th – 12th Grade, Counselors, CTE Teachers, Students, and Parents	SchoolLinks	Postsecondary Planning & Readiness - Provide more opportunities for students to explore future careers and colleges. Students and Counselors work together to build the students 4-year Personal Graduation Plans. Parents have access to program as well. Program will be used in the college and career readiness (CTE) curriculum/classes.
District-Wide Students	College and Career Readiness Plan for Counselors to follow	Postsecondary Planning & Readiness - Elementary, Middle School, and High School Counselors will be following a plan that was designed by a counseling team over the summer to ensure we meet all needs of our students and prepare them for postsecondary readiness and exposure of endorsements, career, and college information.
District-Wide Students Campuses participating: Candlewood, Converse, Franz, Hartman, Hopkins, Millers Point, Park Village, Paschall, Spring Meadows & Woodlake Elementary	College and Career Readiness YES! Our Kids Can 2018 - Present	Postsecondary Planning & Readiness - Elementary campus will be following a plan that was designed to ensure we meet all needs of our students and prepare them for postsecondary readiness and exposure of endorsements, career, and college information.
District-Wide Students Participating Campuses: Park Village ES, Spring Meadows ES, Woodlake ES Kirby MS & Metzger MS	The Most Program College & Career Readiness	Intrapersonal Effectiveness-Self-awareness, Self-management & Responsible Decision Making - The program promotes college and career readiness by participating in the community and learning various job descriptions and observing through real life employment experiences.

Audience	Resource	Goal
District-Wide 9th – 12th Grades (Students selected by program)	Upward Bound	Postsecondary Planning & Readiness - Academic and personal support to participants in their preparation for college through funding from the U.S. Dept. of Education. The program provides opportunities for participants to succeed in their high school academics and ultimately in their higher education pursuits. The goal of Upward Bound is to increase the rate at which participants complete high school and graduate from college or university.
Seniors Participating Campuses: Judson HS & Wagner HS	Alamo Promise Kick off October 2nd	Postsecondary Planning & Readiness - New program to San Antonio, current 12th grade students will have an opportunity to have 2 years of college paid at any Alamo Community College. Not income based and award of associates degree.
District-Wide 9th – 12th Grades (Students selected by program)	College Connection Program Alamo Community College District	Postsecondary Planning & Readiness - College and Career Readiness Counselors will schedule, support and distribute, information to their students about recommended and optional College Connection activities, such as completion of Introduction to College and Pathways Module (Career Coach), an ApplyTexas online admission application (recommended), AlamoENROLL module workshops (recommended), Free Application for Federal Student Aid (FAFSA) sessions, assessment information, and other activities as determined and mutually agreed upon by JISD and Alamo Colleges.
District-Wide Parent Meeting Participating Campuses: Park Village ES, Paschall ES, & Spring Meadows ES	Family Leadership Institute	Family & Community Partnerships System Support - Building community and/family engagement throughout the district
District-Wide Parent and Family Engagement	Operation School Bell Elf Louise, Salvation Army Shoe-In, Food Bank Vouchers & PIE Vouchers	Family & Community Partnerships System Support - Guidance/Counseling department will collaborate with Community Organizations to provide resources to district students, parents and families.

Audience	Resource	Goal
District-Wide Campus Parent Meetings	Coffee with the Counselor	Family & Community Partnerships System Support - Building community and parent/family engagement.
District-Wide Parent Meetings	Three district-wide parent meetings or events to build community involvement.	Family & Community Partnerships System Support - <ul style="list-style-type: none"> • Fall Back to School Fair • Middle of the year parent meeting End of year Symposium. Topic will be based off of survey- bullying, human trafficking, etc.
District-Wide	SACADA (San Antonio Council on Alcohol & Drug Awareness)	Family & Community Partnerships System Support - Families and their children will have access to health promotion and substance use and/or substance dependency prevention services. Program will provide support in Youth Prevention Services, Project Strong Life Case Management Services, and prevention educational resources, brochures, pamphlets, and posters to students' in district.
District-Wide	Baptist Children & Family Services (BCFS) – STAR Program	Family & Community Partnerships System Support - Families and their children have access to individual and family counseling, parent and youth skills training, or case management services.

Completed SEL Trainings and Programs		
Audience	Resource	Goal
District-Wide High School Presentations	Motivational Speaker focusing on Goal Setting Completed 2018-2019 School Year	Intrapersonal Effectiveness - <ul style="list-style-type: none"> • Self-Awareness • Self-Management • Responsible Decision Making 9th -12th grade students targeting at-risk students were offered the opportunity to hear Kent Julian speak about goal setting and decision-making. This focuses on intrapersonal skills
District-Wide Administrators and Counseling Staff	Dr. Langman Presentation: Why Kids Kill: Inside the Minds of School Shooters Training completed August 6, 2018	Personal Health and Safety - A half-day training that will help staff be proactive in recognizing signs and preventing a crisis on campuses.
District-Wide students Participating Campuses: Judson M.S., J-STEAM, Kirby MS, Kitty Hawk MS, Metzger MS, & Woodlake Hills MS	Panorama Survey completed 2018-19 and results was shared during District PD 2018-19	Personal Health and Safety - We used Panorama was used by counselors and teachers this school year in order to conduct a pre and post year survey for students. From the survey we received data on how are students interacted with their teachers and how safe they felt in our schools. We will continue to collect data to drive SEL guidance lessons & small groups.
Elementary Counselors, Social Workers and CIS	Kimochi Training Completed August 2019	Personal Health and Safety – Training was provided in order to enhance counseling skills when working with students who are in emotional distress, need help managing their behaviors or emotions.
Elementary Counselors, Social Workers and CIS	Sand Tray Training Completed August 2019	Personal Health and Safety – Training was provided in order to enhance counseling skills when working with students who are in emotional distress or have a hard time expressing themselves verbally.
District-Wide Guidance and Counseling Staff Monthly Meetings and Professional Development	Training on Human Trafficking –Saul Castellano, Graduation plans, policy & procedures. Self-Harm, Suicide/Homicide, , etc. Training Completed 2017-2018	Family & Community Partnerships System Support - Providing tools counselors and social workers need to be successful and help students and families.